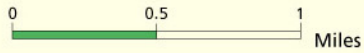


Tahuya State Forest Trail System



Scale: 1.5 inches on the map represents 1 mile on the ground

Map produced in 2005 by Washington State Department of Natural Resources, Engineering Division, Resource Mapping Cartography. Map information was compiled from DNR Geographic Information System, South Puget Sound Region, and other available sources.

Note to Map Users: Extreme care was used during the compilation of this map to ensure accuracy. However, due to changes in ownership and the need to rely on outside information, the Department of Natural Resources cannot accept responsibility for errors or omissions. Therefore, there are no warranties to accompany this material.

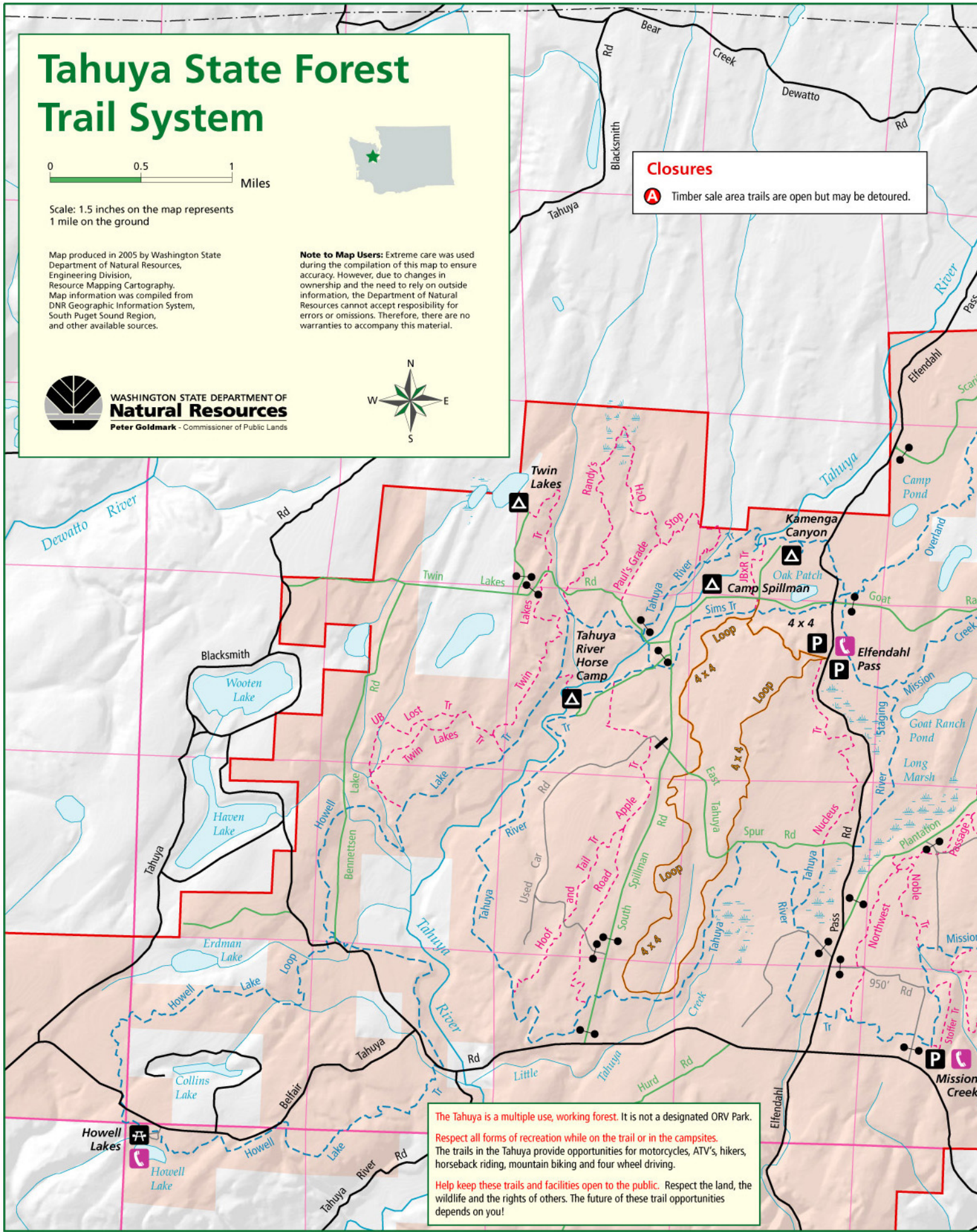


WASHINGTON STATE DEPARTMENT OF **Natural Resources**
Peter Goldmark - Commissioner of Public Lands



Closures

A Timber sale area trails are open but may be detoured.



The Tahuya is a multiple use, working forest. It is not a designated ORV Park. Respect all forms of recreation while on the trail or in the campsites. The trails in the Tahuya provide opportunities for motorcycles, ATV's, hikers, horseback riding, mountain biking and four wheel driving. Help keep these trails and facilities open to the public. Respect the land, the wildlife and the rights of others. The future of these trail opportunities depends on you!