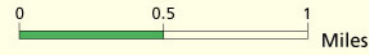


Tahuya State Forest Trail System



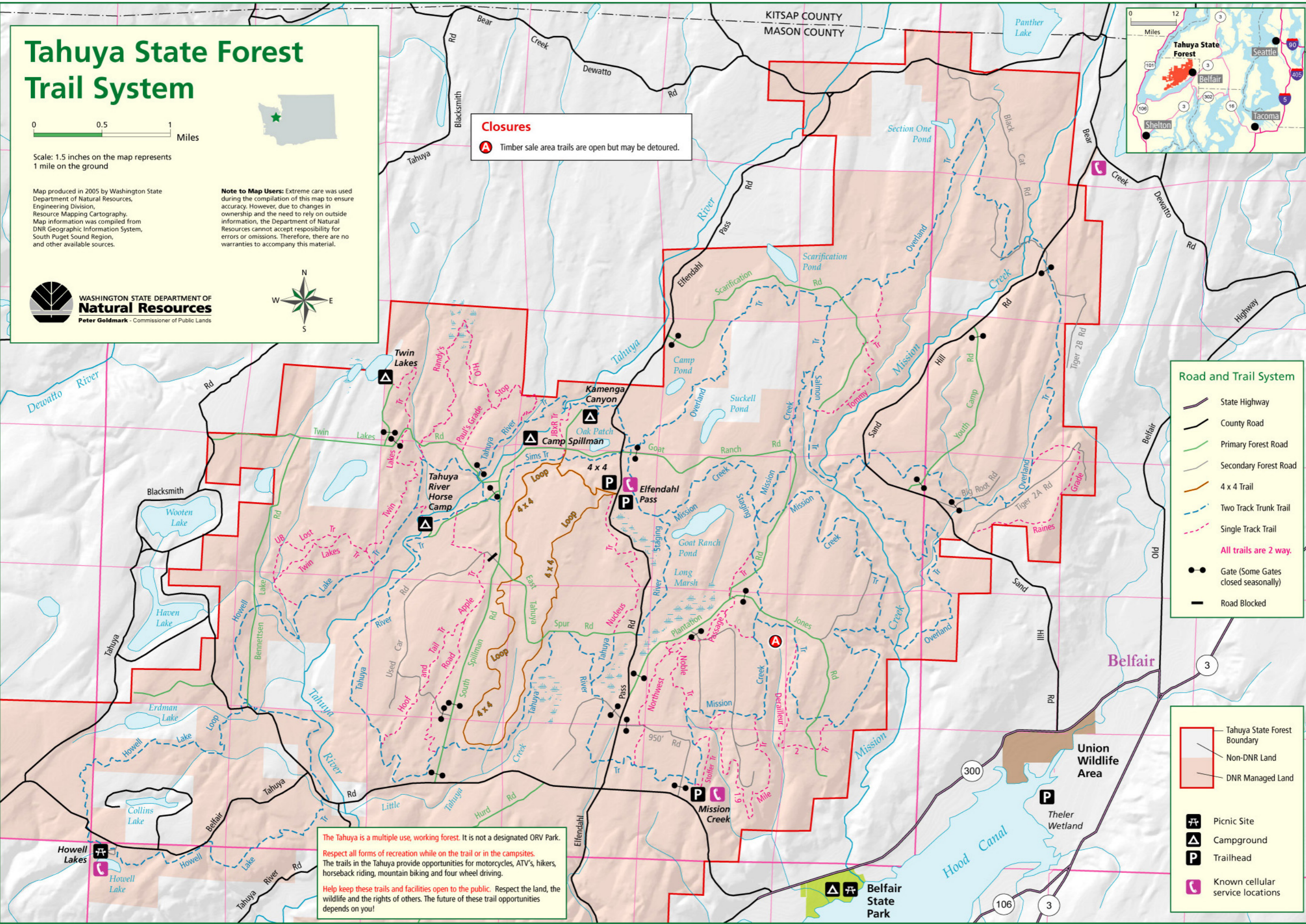
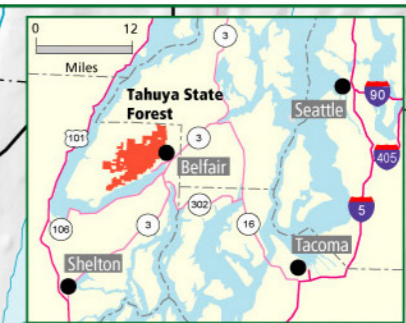
Scale: 1.5 inches on the map represents 1 mile on the ground

Map produced in 2005 by Washington State Department of Natural Resources, Engineering Division, Resource Mapping Cartography. Map information was compiled from DNR Geographic Information System, South Puget Sound Region, and other available sources.

Note to Map Users: Extreme care was used during the compilation of this map to ensure accuracy. However, due to changes in ownership and the need to rely on outside information, the Department of Natural Resources cannot accept responsibility for errors or omissions. Therefore, there are no warranties to accompany this material.



Closures
A Timber sale area trails are open but may be detoured.



Road and Trail System

- State Highway
- County Road
- Primary Forest Road
- Secondary Forest Road
- 4 x 4 Trail
- Two Track Trunk Trail
- Single Track Trail
- All trails are 2 way.
- Gate (Some Gates closed seasonally)
- Road Blocked

- Tahuya State Forest Boundary
- Non-DNR Land
- DNR Managed Land
- Picnic Site
- Campground
- Trailhead
- Known cellular service locations

The Tahuya is a multiple use, working forest. It is not a designated ORV Park. Respect all forms of recreation while on the trail or in the campsites. The trails in the Tahuya provide opportunities for motorcycles, ATVs, hikers, horseback riding, mountain biking and four wheel driving. Help keep these trails and facilities open to the public. Respect the land, the wildlife and the rights of others. The future of these trail opportunities depends on you!

- Ride Legally**
- All off-road vehicles must have:
 - Vehicle license or ORV permit tag.
 - USFS-approved spark arresting muffler for ORVs.
 - Stay on signed or designated trails, or forest roads open to ORV use. No riding:
 - off-road.
 - on trails and roads that are closed.
 - across streams, along lakes or in ditches, cut banks, and wetlands.
 - within recreation sites. Ride only to enter and exit sites.
 - Obey speed limits. (all vehicles)
 - Ride only when sober. Drug and alcohol laws apply to all.
 - No motorized use after dusk or before dawn.
 - Ride ATV's or 4-wheel drive vehicles on 4x4 trail system only. The width limit for all trails and bridges other than the 4x4 trail system is 48." All 4x4 trails are signed with yellow diamonds.
 - See information boards for other posted laws. All state and federal laws apply.
- Ride Safely**
- Watch for:
 - logging and other forest vehicles.
 - unmarked hazards and difficult trail conditions.
 - potential trail changes.
 - other trail users.
 - Don't ride alone.
 - Know your route.
- Camp Responsibly**
- Fires in designated DNR metal fire pits only.
 - Campsites in Tahuya State Forest are for recreational purposes only.
 - Day users: please do not park in overnight sites.
 - No fireworks.
 - Limit stay to 7 days within a 30 day period.
 - No firewood gathering.
 - No garbage service is provided. Pack it in, pack it out.
 - Quiet times are between 10 PM and 6 AM, including generators.
- Phone numbers: Emergency: 911
 DNR: 360-825-1631